



messaging solutions

BT Infonet AS2 Gateway Service

Contents

- AS2 Gateway service description
- AS2 Gateway subscription form
- AS2 Gateway service level agreement

With the BT Infonet AS2 Gateway Service AS2 reaches a new level of interconnectivity and reach for EDI over Internet.

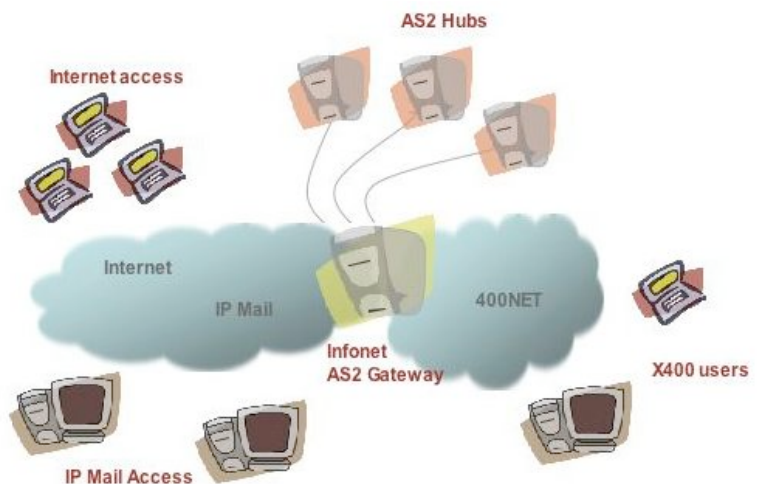
All users that trade via the Internet or communicate through IP Mail EDI/X.400 have AS2 within reach. The only thing you need is the BT Infonet AS2 Gateway Service that communicates with enterprise AS2 hubs.

AS2 (Applicability Statement 2) is a standard for real-time EDI over the Internet, based on mime and http.

AS2 is peer-to-peer, which means that users communicate directly with each other. With the BT Infonet AS2 Gateway Service it is secure, encrypted and provides seamless integration between IP Mail EDI/X.400, Internet and AS2. BT Infonet eliminates the need for end-users of AS2 to build complex ICT infrastructures, automation and security measures for communication over the Internet.

BT Infonet is the provider of 400NET and 400NET Messaging Service.

- >> Reliable
- >> 24 x 7 helpdesk
- >> Seamless communication (Internet, IP Mail, X.400)
- >> Reduced operating and investment costs.
- >> Eliminating the burden of implementation Maintenance and security of an internal system
- >> Monitored 24 hours a day by our helpdesk



Costs

Installation costs are Euro 45,00.

The monthly subscription charges for the AS2 Gateway are Euro 12,50.

Every subscription for the next AS2 Gateway connection costs Euro 6,00 per month.

Traffic charges are € 0,25 per transaction (bi-directional through the gateway).

Contact

To order the BT Infonet AS2 Gateway Service contact channelmanagement of BT Infonet per email: channelmanagement@infonet-europe.nl.



messaging solutions

BT Infonet AS2 Gateway Service

This application concerns: New subscription Change Termination

Customer information (related to IP Mail / 400NET Messaging Service)

1. Company information

Company name	Contact person	Email address
Postal address	Telephone number	Fax number
	Chamber of commerce number	
Zip code	City	Bank
		Bank number

Customer authorizes InfoServices to automatically deduct installation and monthly charges from the designated bank account number for the AS2 Gateway Service, until a termination request has been received.

2. X.400 information

Country Name (C)	Admin Domain (ADMD)	Private Domain (PRMD)	Organization (O)
Org. Unit 1 (OU) (Fac)	Last Name / Surname (LN)		

3. EAN address code : _____ Provide qualifier if available
(13 digits)

Information of AS 2 partner

4. Company information

Company name	Contact person	Email address
Postal address	Telephone number	Fax number
Zip code	City	

5. EAN address code: _____ Provide qualifier if available

6. Start date: _____ dd/mm/yyyy

7. EDI Software vendor: _____

By signing, the customer agrees to the general terms and conditions of the AS2 Gateway service.

Date: _____	Name: _____	Signature: _____
-------------	-------------	------------------

After signing, fax this form to:
BT Infonet Messaging Services
attn Messaging Helpdesk
Email: messagingoperations@bt.com

Direct contact:
Tel: + 31 (0)20 203 4500
Fax: + 31 (0)20 203 4800

messaging solutions

BT Infonet AS2 Gateway Service

SERVICE LEVEL AGREEMENT 16 APRIL 2008

Service Level Agreement (SLA)

The BT Infonet AS2 Gateway Service

AS2 (Applicability Statement 2) is a standard for real-time and peer to peer EDI over the Internet based on mime and http.

The BT Infonet AS2 Gateway Service has an availability of 99,7% measured over a period of 3 months between our systems and the connection to the Internet.

This is excluding planned maintenance and access lines.



The BT Infonet AS2 Gateway Service enables seamless communication between X.400 (400NET), IPMAIL and AS2.

The customer does not need additional software, but can directly communicate with the mailbox on the AS2 Gateway:
infoservices@as2.ibpmail.com.

The 400NET (and any other X.400) user sends the message to the AS2 Gateway that is connected to 400NET.

Helpdesk

The BT Infonet helpdesk is available 24 x 7 via email messagingoperations@bt.com, telephone number (020) 203 4500 and fax number (023) 203 4800.

Invoice

The AS2 Gateway Service is billed separately from the X.400 invoice. The customer reserves a monthly invoice from InfoServices.

The AS2 connection of the trading partner is connected to the Internet. The connection from the AS2 Gateway to the Internet and the AS2 connection of the trading partner is excluded from the SLA.

Maintenance is planned once per month on Sundays for hardware and software changes..

BT Infonet gains all reasonable efforts to adhere to the SLA. Excluded are: force majeure (emergency, acts of war, terrorist attacks, acts of God, catastrophes etc.), fire, explosions, governmental limitations, strikes, riot, sabotage, etc.

In these circumstances BT Infonet will endeavor to reactivate the service as quickly as possible.